

This set contains the adapter, which allows to connect the boiler with 22 mm copper tubes.

Please follow the following remarks:

The following symbols are used in conjunction with these important instructions concerning personal safety as well as technical reliability.



"Safety instructions" are instructions with which you must comply exactly, to prevent injury and material losses.



Please note - non-observance may cause gas leakage and can create a fire hazard and a risk of material losses, poisoning and explosion.



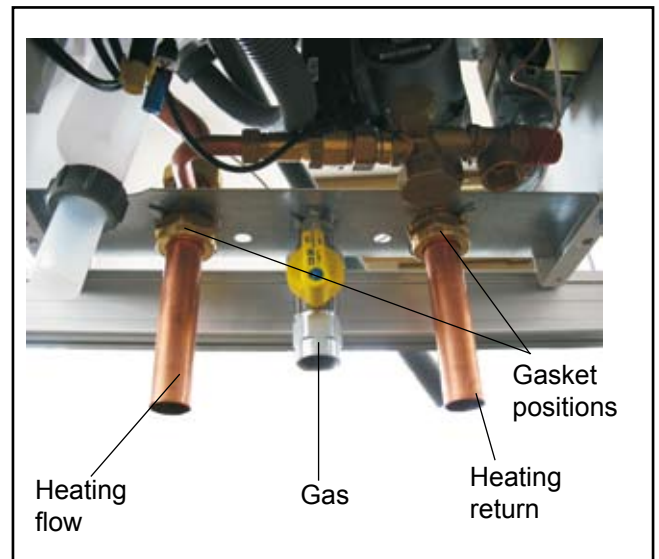
Only recognised specialists are allowed to install this connection adapter set.



Attention!
Don't forget gaskets.
Don't forget sealing the gas connection.



Prior to commissioning, test all pipe and gas connections for leaks.



Fitting dimensions

Boiler	Heating flow	Hot water	Gas	Cold water	Heating return
CGB-35/50	28 mm	-	R ^{3/4} "	-	28 mm

Sliding sleeve

Notice that you need in case of the CGB-35/50 a sliding sleeve between the boiler and the gas ball valve.

Mount the sliding sleeve as shown:



Connection dimensions