



Maintenance instructions

Gas fired condensing boiler

CGB-35 Boiler

CGB-50 Boiler



Index	Page
Safety instructions	3
Maintenance steps	4-13
List of required components	14
Overview of the steps to be taken and the maintenance report	15-16

With innovative maintenance technology

Maintenance position 1




Maintenance position 2



The following symbols are used in this document to highlight special information and warnings. These important instructions relate to personal safety and general operational safety of the equipment.

 "Safety Instructions" must be strictly followed to prevent the risk of endangering or injuring persons or causing material damage to the equipment.


 Danger from 'live' electrical components.
NB: Switch off the main ON/OFF switch before removing any panels.

Never reach into electrical components or touch any electrical contacts when the main ON/OFF switch is turned on! Otherwise you risk a harmful or potentially fatal electric shock.

NB A voltage will still be present at the mains terminals when the main ON/OFF switch is turned off.

"NB" indicates technical instructions which you must observe to prevent material losses and boiler malfunctions.

General notes

 Maintenance work must only be carried out by a qualified heating contractor. Regular maintenance and the exclusive use of original Wolf spare parts are necessary preconditions for trouble-free operation and a long service life. We therefore recommend you arrange a maintenance contract with a local heating contractor.

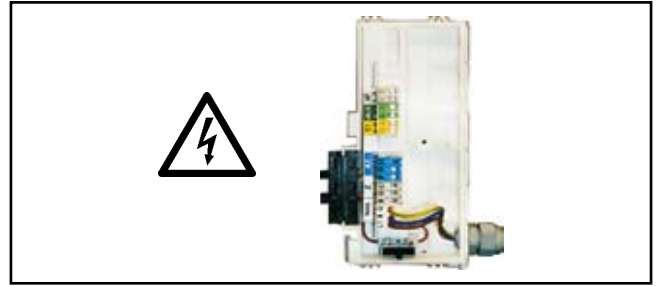


Fig.: Terminal box: Danger from electric current

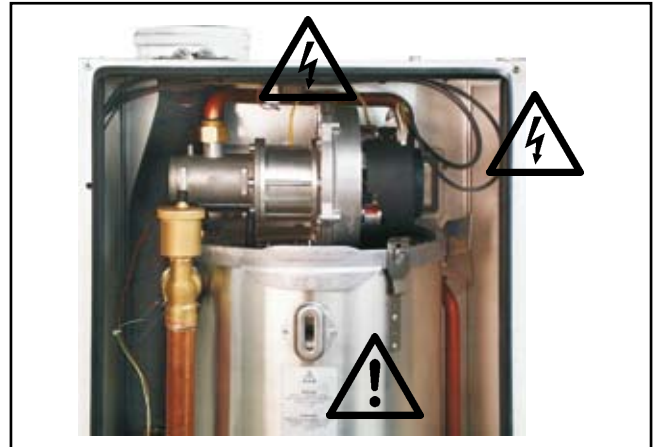


Fig.: Ignition transformer, high voltage ignition electrode, heat exchanger. Risk from 'live' electrical components, risk of burning from hot components

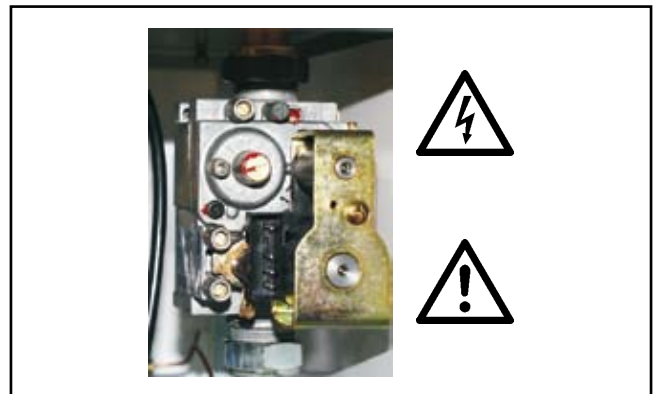


Fig.: Gas combination valve
Danger from electric current
Escaping gas may cause poisoning or the risk of explosion



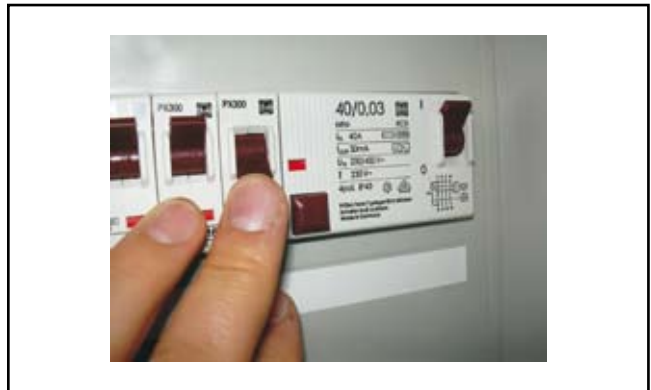
Fig.: Gas connection: Escaping gas may cause poisoning or the risk of explosion

- Pivot the control unit lid down.
Switch OFF the condensing boiler at the ON/OFF switch.



The mains terminals are 'live' even when the ON/OFF switch has been switched OFF.

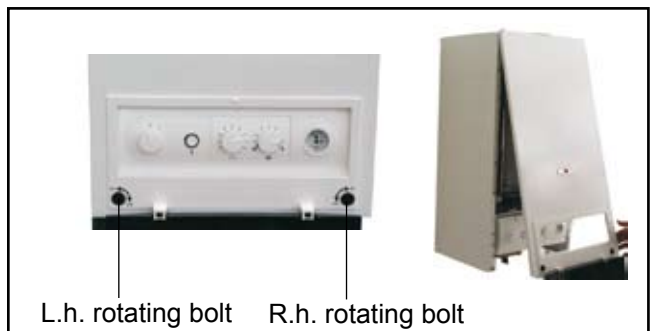
- Disconnect the system from the power supply.



Close the gas tap.



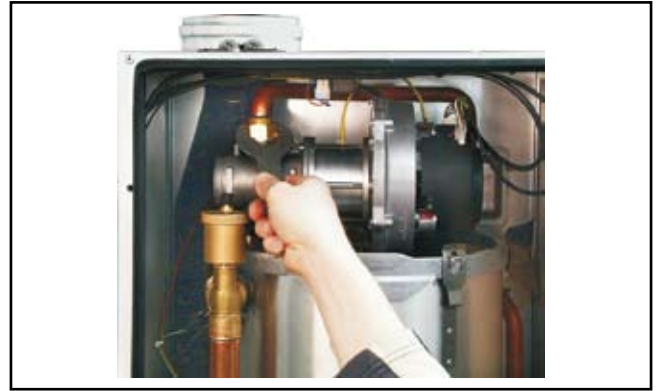
- Unlock the casing lid with the l.h. and r.h. rotating bolts. Release the bottom of the casing lid and unhook at the top.



**Danger of burning**

Several components may be hot. Let these cool down for approx. half an hour or wear gloves.

- Crack open the gas supply connection and remove the gasket.
- Release the heat exchanger locking spring.
- Pivot the heat exchanger into the maintenance position 1.



- Release the electrical cable (6x).



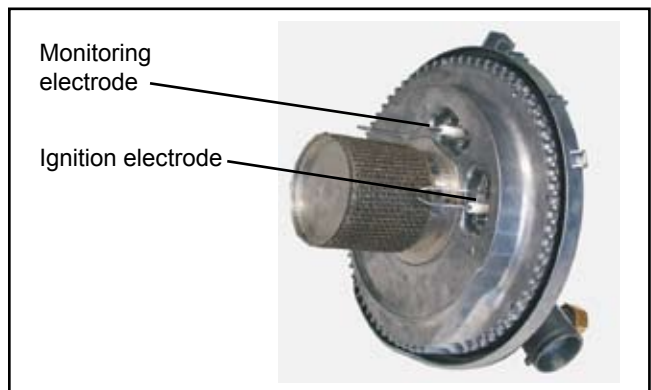
- Open the retaining tab.



- Remove the burner unit upwards.



- Visual burner unit inspection.
Replace the monitoring electrode.
Check and replace the ignition electrode, if necessary.



- Pull the multi-purpose bag over the heat exchanger.



- Release the retainer and pivot the heat exchanger into the maintenance position 2.



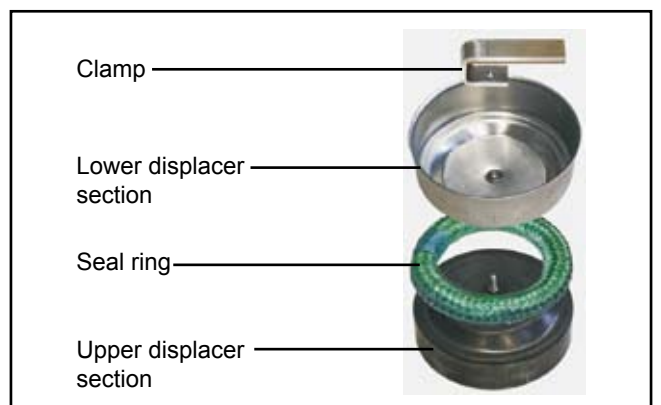
- Hook the multi-purpose bag into the heat exchanger.



- Remove the clamp.



- Remove the displacer segments one after the other.



- Clean the heat exchanger with a brush.
- Visual flue pipe inspection.



- Clean the condensate pan.

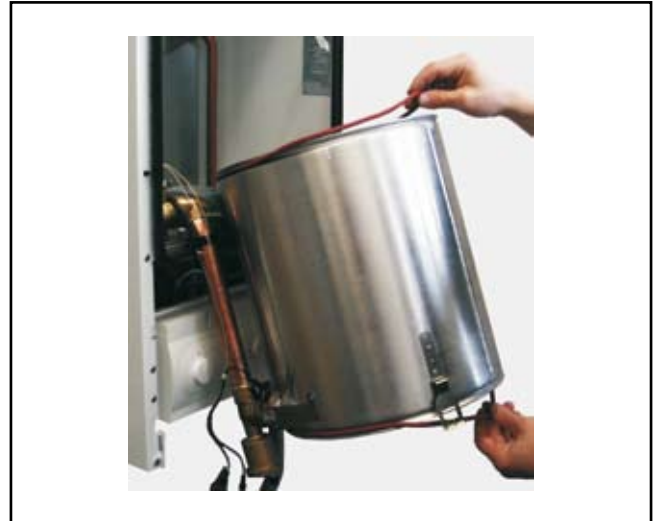


- Remove the multi-purpose bag.



- Replace the heat exchanger gasket at the top and bottom.

NB Never stretch gaskets.



- Lubricate the heat exchanger gaskets at the top and bottom with silicone grease.



- Lubricate the heat exchanger seat.



Assembly

- Pivot the heat exchanger into the maintenance position 1, insert the burner unit and thread in the rear retaining spring. Position the front retaining spring with a key into its position.



- Tip the heat exchanger (forward) to return it to maintenance position 2. Insert the upper displacer section as far as it will go into the burner.



- Replace the seal ring and the lower displacer section.



- Insert the displacer clamp.



- Pivot the heat exchanger back into the maintenance position 1 and plug in the cables (6x).

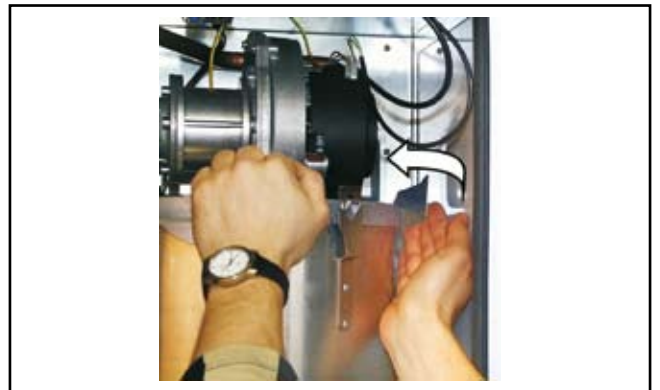


- Release the retainer and pivot the heat exchanger fully back into the boiler.

NB Check the lower heat exchanger gasket.



- Click the heat exchanger locking spring back into place.



- Install the gas restrictor and gasket.

CGB-35

Gas type	Colour	Diameter
H	yellow	660
P	red	510

CGB-50

Gas type	Colour	Diameter
H	light grey	850
P	lilac	620



- Check the balanced flue system.



Checking the siphon

- ⚠ If required, clean and re-fill.
- ⚠ Check for tight fit, prevent flue gas from escaping.



- If you notice a loss of water, check the expansion vessel inlet pressure and increase it, if required, to 0.75 bar. The heating circuit must be at zero pressure. Then fill the system.



Completion

Check gas train for soundness and water connections for leaks.

- Fit the casing.

**Test run**

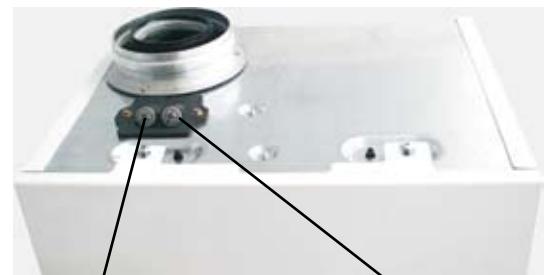
- Reset the MCBs.
- Open the gas tap.
- Switch the boiler ON.
- Set the program selector to emissions test mode.



Emissions test mode position

Carrying out a ventilation test

Check LAF for soundness, if the $\text{CO}_2 > 0.2\%$.



"Flue gas"
test port

"Air supply"
test port

Carrying out a flue gas test

In emissions test mode, enter the captured values in the maintenance report.

Re-adjust the CO_2 value, if required.
(see installation instructions).

Checking control accessories



Fig.: DWT



Fig.: AWT

- The display must show BUS connection



BUS connection

Maintenance requires the following:

1	Maintenance set CGB-35/50	Part no. 86 11 173
1	Cleaning set - supplementary set	Part no. 24 82 875
1	Cleaning brush	Part no. 24 40 053
1	Test equipment for BlmSch test [Germany]	

We recommend you have the following as part of your service kit:

1	Gasket set, flue pipe DN 80	Part no. 86 11 184
1	Silicone grease	10 g tube part no. 86 02 264
		or 400 g tube part no. 35 00 103
1	Burner gasket	Part no. 86 11 177
1	Return temperature sensor	part no. 86 03 036
1	Flow temperature sensor	part no. 86 03 038
1	Flue gas temperature limiter	part no. 86 03 058
1	Ignition electrode	part no. 86 03 061
1	Safety valve with clip	Part no. 20 70 315
1	Gasket set tilted bush flow / return	Part no. 86 11 186
1	Protective anode for enamelled cylinder	

No.	Step	Report item	
1	Switch OFF the boiler, switch OFF the emergency stop switch		
2	Close the gas supply valve,		
3	Remove the casing and the combustion chamber housing		
4	Undo the gas fitting		
5	Pull the electrical cables off the fan, sensors and electrodes		
6	Remove the heat exchanger lid		
7	Visual inspection of the burner unit	O	
8	Check the ignition electrodes and replace if required	O	
9	Clean the heating water heat exchanger	O	
10	Clean the condensate pan	O	
11	Check and replace gaskets, if required and lubricate the replacements with silicone grease	O	
12	Refill granulate, if a neutralising system is installed	O	
13	Check the protective anode every 2 years on enamelled cylinders and replace, if necessary	O	
14	Assemble the boiler		
15	Clean and fill the siphon, install and check for tight fit	O	
16	Check the expansion vessel in case of water loss	O	
17	Open the gas supply valve and start the boiler		
18	Gas soundness test	O	
19	Flue gas system soundness test	O	
20	Check the ignition	O	
21	Check the interaction with control accessories	O	
22	Flue gas test in emissions test mode	O	
23	Gross flue gas temperature		°C
24	Air supply temperature		°C
25	Net flue gas temperature		°C
26	Carbon dioxide content (CO ₂)		%
27	or oxygen content (O ₂)		%
28	Carbon monoxide content (CO)		%
29	Flue gas loss		%

Confirm maintenance (company stamp, signature)

Date: _____

No.	Step	Report item	
1	Switch OFF the boiler, switch OFF the emergency stop switch		
2	Close the gas supply valve,		
3	Remove the casing and the combustion chamber housing		
4	Undo the gas fitting		
5	Pull the electrical cables off the fan, sensors and electrodes		
6	Remove the heat exchanger lid		
7	Visual inspection of the burner unit	O	
8	Check the ignition electrodes and replace if required	O	
9	Clean the heating water heat exchanger	O	
10	Clean the condensate pan	O	
11	Check and replace gaskets, if required and lubricate the replacements with silicone grease	O	
12	Refill granulate, if a neutralising system is installed	O	
13	Check the protective anode every 2 years on enamelled cylinders and replace, if necessary	O	
14	Assemble the boiler		
15	Clean and fill the siphon, install and check for tight fit	O	
16	Check the expansion vessel in case of water loss	O	
17	Open the gas supply valve and start the boiler		
18	Gas soundness test	O	
19	Flue gas system soundness test	O	
20	Check the ignition	O	
21	Check the interaction with control accessories	O	
22	Flue gas test in emissions test mode	O	
23	Gross flue gas temperature		°C
24	Air supply temperature		°C
25	Net flue gas temperature		°C
26	Carbon dioxide content (CO ₂)		%
27	or oxygen content (O ₂)		%
28	Carbon monoxide content (CO)		%
29	Flue gas loss		%

Confirm maintenance (company stamp, signature)

Date: